



600D-LED-TB

FEATURES :

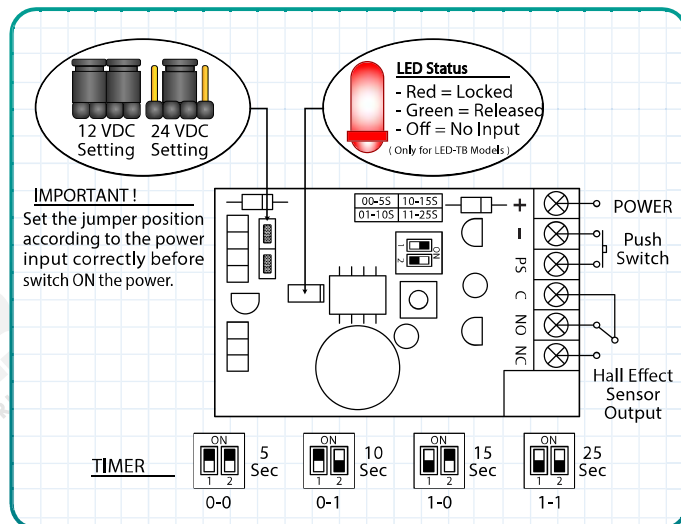
- ✓ Built-In buzzer alarm beep magnetic lock. Designed with buzzer; when timer set up for 5~25 seconds as door close delay time. If the magnetic lock doesn't close after the set up time, the magnetic lock will alarm until the door close.
- ✓ Dual Voltage Selectable (12 VDC / 24 VDC)
- ✓ Selectable Re-Locking Timer 5,10,15, 25 Sec
- ✓ Built-In EXIT Push Switch
- ✓ Low Current Consumption
- ✓ Reliable Holding Force
- ✓ Hall Effect Sensor Monitoring Output
- ✓ Green/Red LED Indication For EM Lock Status
- ✓ Durable & Silence Operation
- ✓ Cosmetic Anodized Aluminum Casing
- ✓ Surge & Spike Protection PCB
- ✓ Anti-Tamper Jam Nuts
- ✓ Full Range Of Optional Brackets
- ✓ Anti Residual Magnetism Kick Off Button

SPECIFICATIONS :

- 1 **Voltage Input** : 12 VDC / 24 VDC
- 2 **Current Draw** : 12V @ 510mA x2 (±5%) ;
24V @ 285mA x2 (±5%)
- 3 **Holding Force** : Up to 600 lbs x2 (272 kg x2)
- 4 **Hall Effect Contact** : SPDT rated 1A at 24 VDC
- 5 **Anti-Rust Surface Treatment** : Blue Zinc Plating
- 6 **Operating Temperature** : 0~55° C (32~131° F)
- 7 **Operating Humidity** : 0~95% (non condensing)
- 8 **Weight** : 3.80 kg (±1%)
- 9 **Dimensions** : Magnet - (L)500x(W)42x(T)25 mm
Armature - (L)180x(W)38x(T)11 mm

EBELCO Electromagnetic locks 600 Series are known with its heavy duty together with its excellent holding force and remarkable standard feature.

The series are compliance to **CE** and **Underwriters' Laboratories (UL)**. Products are manufactured under the highest quality control to achieve the commitment to customer who



*Disclaimer :

EBELCO reserve the right to go ahead with any modifications of the models or features or price without forewarning. All the information and specifications stated in this document are current at the time of publication.



© EBELCO COPYRIGHT 2022.



WWW.EBELCO.COM

SECURITY . QUALITY . RELIABILITY

EBELCO INDUSTRIES SDN. BHD. 474704-V

16, Jalan TTC 26, Taman Teknologi Cheng,
75250, Melaka, Malaysia.

☎ : [+606] 333 8855

🖨 : [+606] 333 8822

🌐 : www.ebelco.com

✉ : enquiry@ebelco.com